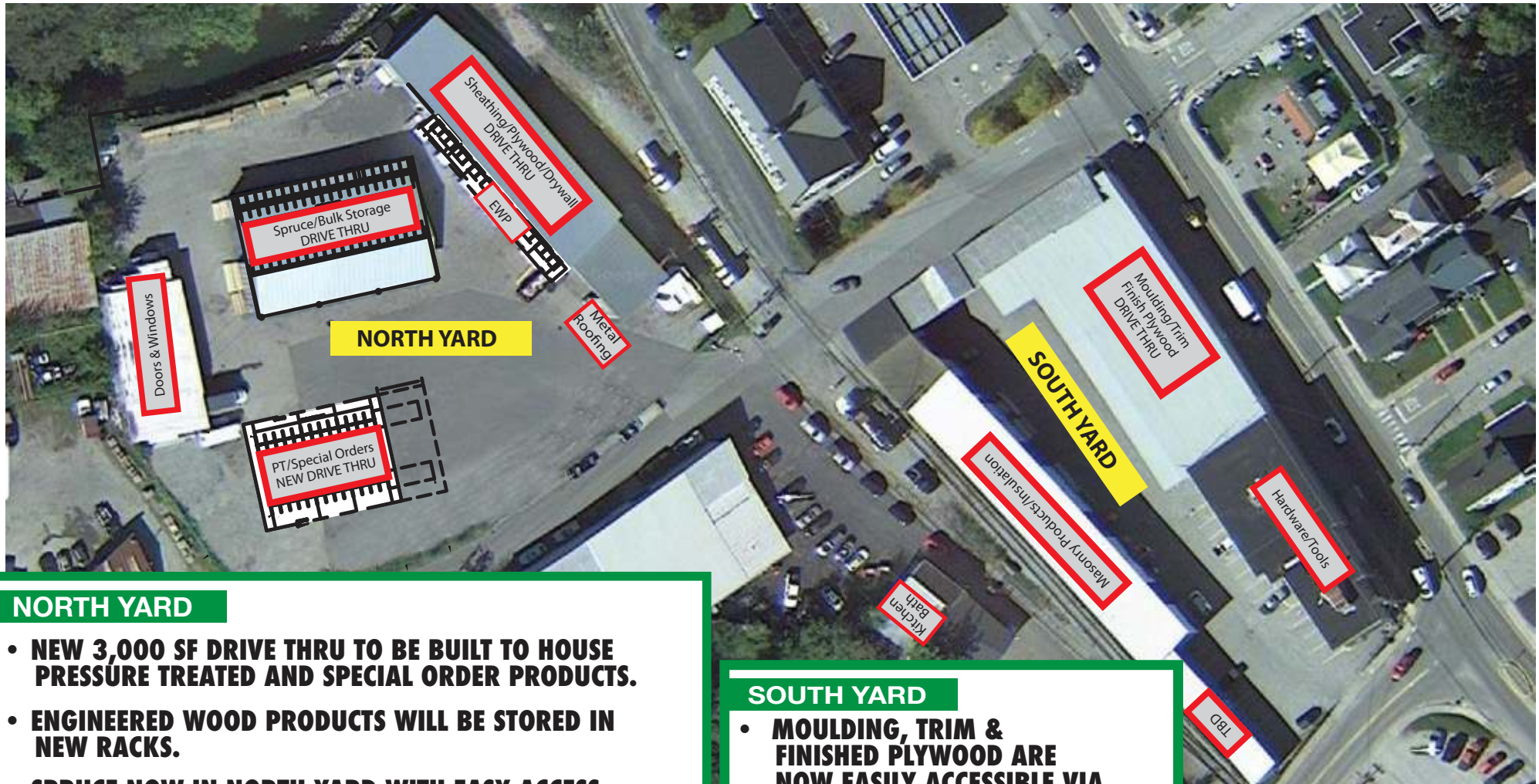


**PLEASE PARDON OUR APPEARANCE WHILE WE RE-ORGANIZE OUR YARDS.**



### **NORTH YARD**

- **NEW 3,000 SF DRIVE THRU TO BE BUILT TO HOUSE PRESSURE TREATED AND SPECIAL ORDER PRODUCTS.**
- **ENGINEERED WOOD PRODUCTS WILL BE STORED IN NEW RACKS.**
- **SPRUCE NOW IN NORTH YARD WITH EASY ACCESS VIA DRIVE THRU.**
- **SHEATHING, PLYWOOD AND DRYWALL NOW IN NORTH YARD WITH EASY ACCESS VIA DRIVE THRU.**
- **MATERIAL WILL NOW BE OFF THE GROUND AND UNDER COVER.**

### **SOUTH YARD**

- **MOULDING, TRIM & FINISHED PLYWOOD ARE NOW EASILY ACCESSIBLE VIA THE SOUTH YARD DRIVE THRU.**
- **MASONRY PRODUCTS & INSULATION.**
- **SPACE FOR KITCHEN & BATH STORAGE.**

